



JOURNAL OF IMAGE AND GRAPHICS

主办：中国科学院遥感与数字地球研究所
中国图象图形学学会
北京应用物理与计算数学研究所

中国图象图形学报

2016
09
VOL.21

ISSN1006-8961
CN11-3758/TB



图像细节增强 P1119

图像处理和编码

融合梯度信息的改进引导滤波

谢伟, 周玉钦, 游敏 1119

用于屏幕图像编码的索引图快速预测算法

陈规胜, 宋传鸣, 王相海, 刘丹 1127

图像分析和识别

哈希编码结合空间金字塔的图像分类

彭天强, 栗芳 1138

自上而下注意力分割的细粒度图像分类

冯语姗, 王子磊 1147

结合类内和类间距离的可能聚类分割算法

刘璐, 吴成茂 1155

基于频率簇模型的人脸识别

袁姮, 王志宏, 姜文涛 1166

图像理解和计算机视觉

不同池化模型的卷积神经网络学习性能研究

刘万军, 梁雪剑, 曲海成 1178

惰性随机游走视觉显著性检测算法

李波, 卢春园, 金连宝, 冷成财 1191

自适应邻域相关性的背景建模

万剑, 洪明坚, 赵晨丘 1202

实时鲁棒的特征点匹配算法

陈天华, 王福龙 1213

暗通道先验图像去雾的大气光校验和光晕消除

赵锦威, 沈逸云, 刘春晓, 欧阳毅 1221

计算机图形学

定点容量限制质心Power图生成

郑利平, 郜文灿, 李尚林, 曹力 1229

医学图像处理

多相期增强CT中肝内血管的自动分割

袁戎, 石姝玥, 谢庆国 1238

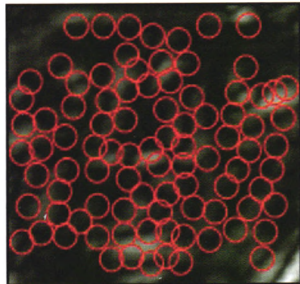
胸部解剖结构回归模型的虚拟双能量X线减影方法

陈胜, 张茗屋 1247

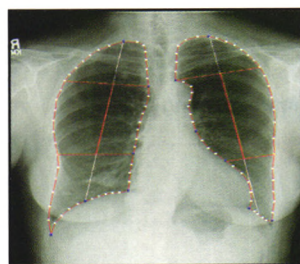
遥感图像处理

参考1维光谱差异的区域生长种子点选取方法

李修霞, 荆林海, 李慧, 唐韵玮, 戈文艳 1256



基于频率簇模型的人脸识别
(第1166页)



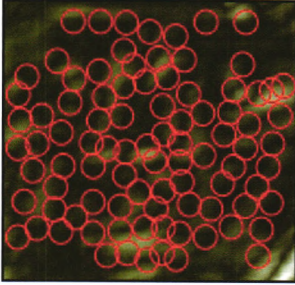
胸部解剖结构回归模型的虚拟双能量X线减影方法
(第1247页)



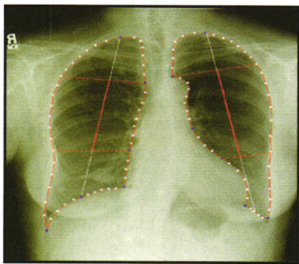
参考1维光谱差异的区域生长种子点选取方法
(第1256页)

CONTENTS

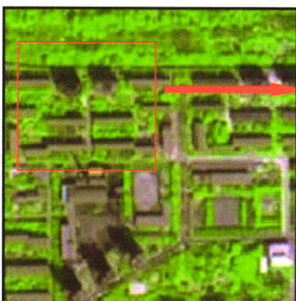
JOURNAL OF IMAGE AND GRAPHICS



Face recognition method based on frequency cluster (P1166)



Virtual dual-energy subtraction method for X-ray radiographs by using regression model based on chest anatomical structure(P1247)



Seed extraction method for seeded region growing based on one-dimensional spectral differences(P1256)

Image Processing and Coding

- Improved guided image filtering integrated with gradient information
Xie Wei, Zhou Yuqin, You Min 1119
- Fast prediction algorithm of index maps for screen image coding
Chen Guisheng, Song Chuanming, Wang Xianghai, Liu Dan 1127

Image Analysis and Recognition

- Image classification algorithm based on hash codes and space pyramid
Peng Tianqiang, Li Fang 1138
- Fine-grained image categorization with segmentation based on top-down attention map
Feng Yushan, Wang Zilei 1147
- Possibilistic clustering segmentation algorithm based on intra-class and inter-class distance
Liu Lu, Wu Chengmao 1155
- Face recognition method based on frequency cluster
Yuan Heng, Wang Zhihong, Jiang Wentao 1166

Image Understanding and Computer Vision

- Learning performance of convolutional neural networks with different pooling models
Liu Wanjun, Liang Xuejian, Qu Haicheng 1178
- Saliency detection based on lazy random walk
Li Bo, Lu Chunyuan, Jin Lianbao, Leng Chengcai 1191
- Background modeling based on adaptive neighborhood correlation
Wan Jian, Hong Mingjian, Zhao Chenqiu 1202
- Real-time robust feature-point matching algorithm
Chen Tianhua, Wang Fulong 1213
- Dark channel prior-based image dehazing with atmospheric light validation and halo elimination
Zhao Jinwei, Shen Yiyun, Liu Chunxiao, Ouyang Yi 1221

Computer Graphics

- Generation method for a centroidal capacity constrained Power diagram with fixed sites
Zheng Liping, Gao Wencan, Li Shanglin, Cao Li 1229

Medical Image Processing

- Automatic hepatic vessel segmentation algorithm in multi-phase contrast-enhanced CT
Yuan Rong, Shi Shuyue, Xie Qingguo 1238
- Virtual dual-energy subtraction method for X-ray radiographs by using regression model based on chest anatomical structure
Chen Sheng, Zhang Mingwu 1247

Remote Sensing Image Processing

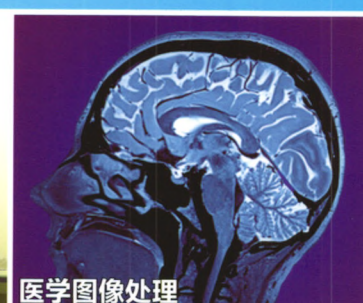
- Seed extraction method for seeded region growing based on one-dimensional spectral differences
Li Xiuxia, Jing Linhai, Li Hui, Tang Yunwei, Ge Wenyan 1256



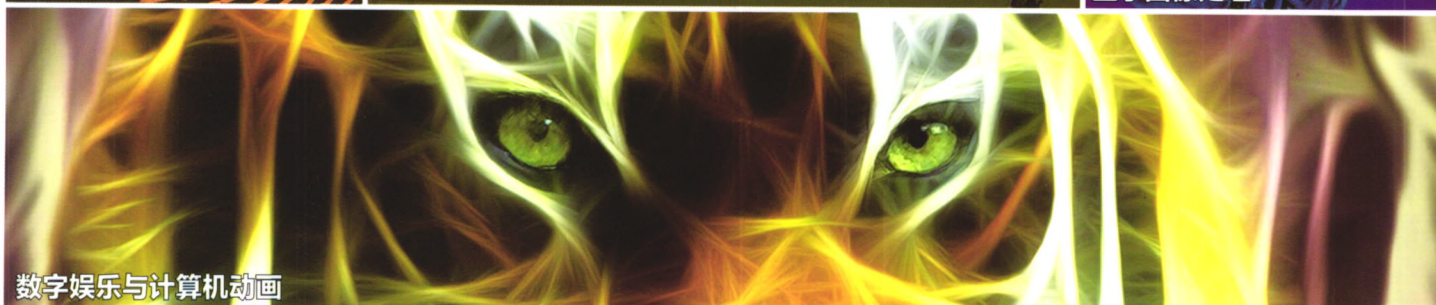
图像识别



计算机辅助设计



医学图像处理



数字娱乐与计算机动画



遥感图像处理



三维建模



图像采集



ISSN 1006-8961



9 771006 896164