

中国科技论文统计源期刊(中国科技核心期刊)  
中国万方数据库/中国知网/超星域出版 全文收录  
中文科技期刊数据库/国家科技期刊开放平台 全文收录

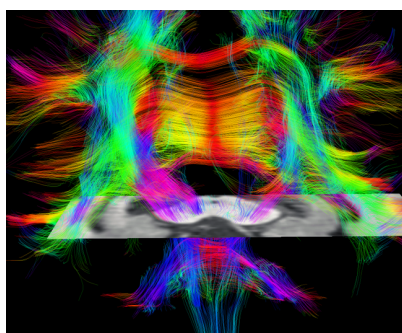
ISSN 1673-5765 CN 11-5434/R



中国卒中学会官方杂志

# 中国卒中杂志

Chinese Journal of Stroke



脑出血患者MRI传导束重建图像 1225

本期专题:  
系统性血管炎的脑损害

## 述评

困局与破局: 聚焦大动脉炎并发脑梗死 1199

## 专题论坛

实质性神经白塞综合征临床特征分析 1204

以缺血性卒中发病的大动脉炎15例临床

特点分析 1210

## 论著

大脑脚非对称性比例与非优势半球出血性镜像卒中后语言、运动及日常生活能力变化的相关性研究 1222

RECO支架与Solitaire支架对急性前循环大血管闭塞血管再通的疗效及安全性对比研究 1229

## 综述

脑淀粉样血管病发病机制的研究进展 1278

卒中后情感不稳发生机制的研究进展 1284

## Commentary

Ischemic Stroke in Takayasu Arteritis: Dilemma and Solving Strategy 1199

## Special Forum

Clinical Characteristics of Parenchymal Neuro-Behçet Syndrome 1204

Clinical Characteristics of Case Series of Takayasu Arteritis with Ischemic Stroke as the First Symptom 1210

## Original Contributions

Correlation between the Asymmetry Rate of Cerebral Peduncle and Changes of Language, Motor Function and Activity of Daily Life after Hemorrhagic Mirror Stroke of Non-Dominant Hemisphere 1222

Comparative Efficacy and Safety of RECO Flow Restoration Device versus Solitaire Stent for Acute Large Vessel Occlusion in Anterior Circulation 1229

## Reviews

Advances in the Mechanism of Cerebral Amyloid Angiopathy 1278

Progress in the Pathogenesis of Post-stroke of Emotional Instability 1284

ISSN 1673-5765



ZHONGGUO CUZHONG ZAZHI

VOLUME 16. NUMBER 12. DECEMBER 2021

2021年12月 第16卷 第12期

万方数据

中国卒中杂志

VOLUME 16. NUMBER 12. 2021

第十六卷 第十二期

述评

1199 困局与破局：聚焦大动脉炎并发脑梗死 赵义

专题论坛：系统性血管炎的脑损害

1204 实质性神经白塞综合征临床特征分析 廖秋菊, 赵义, 李霞

1210 以缺血性卒中发病的大动脉炎15例临床特点分析 孔芳, 黄旭, 魏廉, 赵义

临床观点

1217 脑出血信号改变机制与磁共振影像表现 刘欣瑶, 毕京凤, 张英魁

论著

1222 大脑脚非对称性比例与非优势半球出血性镜像卒中后语言、运动及日常生活能力变化的相关性研究  
杜秀玉, 翟晓东, 刘志, 杨静, 任惠敏, 陈静, 胡鸿鹏, 戈蕾, 杨金水

1229 RECO支架与Solitaire支架对急性前循环大血管闭塞血管再通的疗效及安全性对比研究  
刘福德, 陈晨, 宋文锋, 袁兴运, 韩建峰, 王建懿

1235 缺血性卒中患者吞咽障碍危险因素的meta分析 张冉, 蔡卫新, 董丽丽, 祝琴, 牛明芳, 肖倩, 孙卫格, 张春花

1242 既往卒中病史对缺血性脑血管病患者卒中结局的影响研究  
程丝, 胥芹, 许喆, 石延枫, 刘阳, 李子孝, 孟霞, 李昊, 王拥军

1248 急性缺血性卒中静脉溶栓患者不同部位脑白质疏松的影响因素分析 陈政宇, 陈国芳, 陈彤, 马冬娇

1253 急性缺血性卒中静脉溶栓后早期神经功能恶化影响因素分析  
曹双双, 张晓燕, 王建伟, 赵磊, 陈红兵, 汪明玉

1259 缺血性卒中患者预防肺栓塞的最佳证据总结 杨慕维, 刘高, 和意娴, 郭清源, 蔡恩丽

病例讨论

1268 以头晕为首发症状的双侧延髓内侧梗死2例 凌一童, 张晓宇, 辛华, 张文婧, 董丽华

1273 以细菌性脑膜炎为病因的合并脑小血管病影像表现的颅内深静脉血栓形成1例  
薛晶, 张广, 孙宏巍, 翟蕴, 孙艳艳, 汤颖

综述

1278 脑淀粉样血管病发病机制的研究进展 吴娟娟, 倪俊

1284 卒中后情感不稳发生机制的研究进展 王爱民, 王宪苓

1290 可穿戴医疗设备在卒中高危人群和患者中的应用 李嘉华, 蔡婧婧, 任力杰

1296 小脑与卒中后运动学习关系的研究进展 林丽珍, 范杰诚, 朱新蕊, 贾凡, 郭培武, 王昱凯, 张淑云

教学园地

1302 以问题为基础教学法在颅内动脉瘤外科治疗临床教学中的应用 鲁悦, 陶涛, 庄宗, 李伟, 杭春华

封三 本期缩略语表

# CONTENTS IN BRIEF

Chinese Journal of Stroke

Monthly Established in January 2006  
Volume 16, Number 12, December 20, 2021

## Commentary

- 1199 Ischemic Stroke in Takayasu Arteritis: Dilemma and Solving Strategy ZHAO Yi

## Special Forum: Systemic Vasculitis Related Brain Injury

- 1204 Clinical Characteristics of Parenchymal Neuro-Behçet Syndrome LIAO Qiuju, ZHAO Yi, LI Xia  
1210 Clinical Characteristics of Case Series of Takayasu Arteritis with Ischemic Stroke as the First Symptom  
KONG Fang, HUANG Xu, WEI Lian, ZHAO Yi

## Clinical Perspectives

- 1217 Imaging Features of Intracerebral Hemorrhage on MRI and the Mechanism of Neuroimaging Changes  
LIU Xinyao, BI Jingfeng, ZHANG Yingkui

## Original Contributions

- 1222 Correlation between the Asymmetry Rate of Cerebral Peduncle and Changes of Language, Motor Function and Activity of Daily Life after Hemorrhagic Mirror Stroke of Non-Dominant Hemisphere DU Xiuyu, ZHAI Xiaodong, LIU Zhi, YANG Jing, REN Huimin, CHEN Jing, HU Hongpeng, GE Lei, YANG Jinshui  
1229 Comparative Efficacy and Safety of RECO Flow Restoration Device versus Solitaire Stent for Acute Large Vessel Occlusion in Anterior Circulation LIU Fude, CHEN Chen, SONG Wenfeng, YUAN Xingyun, HAN Jianfeng, WANG Jianyi  
1235 A Meta-analysis of Risk Factors for Dysphagia among Patients with Ischemic Stroke ZHANG Ran, CAI Weixin, DONG Lili, ZHU Qin, NIU Mingfang, XIAO Qian, SUN Weige, ZHANG Chunhua  
1242 Effect of Prior Stroke on Stroke Outcomes in Patients with Ischemic Cerebrovascular Disease CHENG Si, XU Qin, XU Zhe, SHI Yanfeng, LIU Yang, LI Zixiao, MENG Xia, LI Hao, WANG Yongjun  
1248 Influencing Factors of Leukoaraiosis at Different Brain Regions in Patients with Intravenous Thrombolysis for Acute Ischemic Stroke CHEN Zhengyu, CHEN Guofang, CHEN Tong, MA Dongjiao  
1253 The Related Factors of Early Neurological Deterioration after Intravenous Thrombolysis in Patients with Acute Ischemic Stroke CAO Shuangshuang, ZHANG Xiaoyan, WANG Jianwei, ZHAO Lei, CHEN Hongbing, WANG Mingyu  
1259 Pooled Analysis of Best Evidences of Prevention of Pulmonary Embolism in Patients with Ischemic Stroke YANG Muwei, LIU Gao, HE Yixian, GUO Qingyuan, CAI Enli

## Case Discussion

- 1268 Bilateral Medial Medullary Infarction with the First Symptom of Dizziness: Two Cases Report LING Yitong, ZHANG Xiaoyu, XIN Hua, ZHANG Wenjing, DONG Lihua  
1273 A Case of Deep Cerebral Venous Thrombosis Caused by Bacterial Meningitis with Imaging Manifestation of Cerebral Small Vessel Disease XUE Jing, ZHANG Guang, SUN Hongwei, ZHAI Yun, SUN Yanyan, TANG Ying

## Reviews

- 1278 Advances in the Mechanism of Cerebral Amyloid Angiopathy WU Juanjuan, NI Jun  
1284 Progress in the Pathogenesis of Post-stroke of Emotional Instability WANG Aimin, WANG Xianling  
1290 Application of Wearable Medical Devices in Stroke Patients and Population at High Risk of Stroke LI Jiahua, CAI Jingjing, REN Lijie  
1296 Progress in the Relationship between Cerebellum and Motor Learning after Stroke LIN Lizhen, FAN Jiecheng, ZHU Xinrui, JIA Fan, GUO Peiwu, WANG Yukai, ZHANG Shuyun

## Teaching Garden

- 1302 Application of Problem-based Learning in Clinical Teaching of Intracranial Aneurysms Management LU Yue, TAO Tao, ZHUANG Zong, LI Wei, HANG Chunhua

## Responsible Institution

Ministry of Science and Technology,  
P.R.C

## Sponsor

Institute of Scientific and Technical  
Information of China  
Scientific and Technical  
Documentation Press

## Honorary Chairman

ZHAO Jizong

## Editor-in-Chief

WANG Yongjun

## Associate Editors

Ka-Sing Wong

DONG Qiang

ZENG Jinsheng

WANG Chunxue

## Executive Editor

ZHAO Yi

## English Language Editor

David Z. Wang (USA)

## Managing Director

WANG Chunxue

## Edited and Published by

Editorial Department of Chinese Journal  
of Stroke

Fuxing Road No. 15, Haidian District,  
Beijing, 100038

Tel: (010) 58882845

<http://www.chinastroke.org.cn>

E-mail: [cjs@chinastroke.net](mailto:cjs@chinastroke.net)

## Domestic Distributor:

China Post Beijing Post Offices

Code No. 80-507

## Price

RMB 36.00 Yuan

## CSSN

ISSN 1673-5765

CN 11-5434/R

Copyright 2021 by the Publishing  
Department of Chinese Journal of  
Stroke