

General Psychiatry

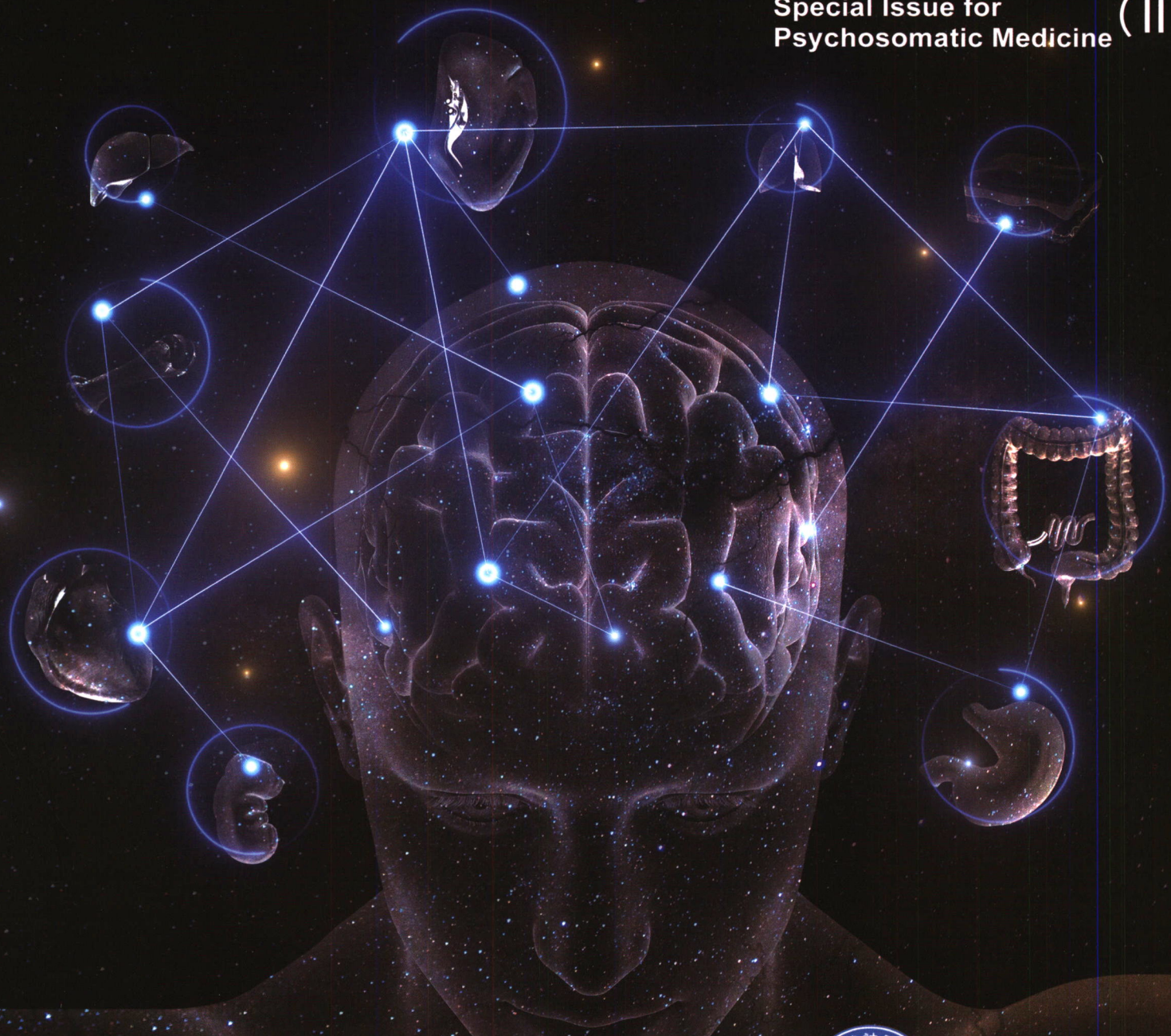


GPSYCH has now
been accepted into ESCI

Volume 35
Issue 6
December 2022

gpsych.bmj.com

Special Issue for
Psychosomatic Medicine (II)



ISSN 2096-5923

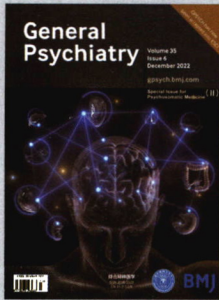
9 772096 592226

综合精神医学
ISSN 2096-5923
CN 31-2152/R



BMJ

万方数据

**Editor in Chief**

Yifeng Xu (China)

Deputy EditorsJinghong Chen (China)
Min Zhao (China)**Associate Editors**Kenneth J Gill (USA)
Lingjiang Li (China)
Tao Li (China)
Lin Lu (China)
Michael R Phillips (Canada)
Norman Sartorius (Switzerland)
Hanting Zhang (USA)**Systematic Review and
Meta-analysis Editor**

Chunbo Li (China)

Biostatistical EditorsChangyong Feng (USA)
Hua He (USA)
Xin M Tu (USA)
Xinlian Zhang (USA)**Editorial Office**Andrew Fralick (USA)
Marlys Bueber (USA)
Shi Gao (China)
Liya Sun (China)
Manfei Xu (China)
Yu Zhang (China)

Disclaimer: The Editor of *GPSYCH* has been granted editorial freedom and *GPSYCH* is published in accordance with editorial guidelines issued by the World Association of Medical Editors and the Committee on Publication Ethics. *GPSYCH* is primarily intended for healthcare professionals and its content is for information only. The Journal is published without any guarantee as to its accuracy or completeness and any representations or warranties are expressly excluded to the fullest extent permitted by law. Readers are advised to independently verify any information on which they choose to rely. Acceptance of advertising by *GPSYCH* does not imply endorsement. Neither *Shanghai Mental Health Center* nor *BMJ Publishing Group Limited* shall have any liability for any loss, injury or damage howsoever arising from *GPSYCH* (except for liability which cannot be legally excluded).

ISSN: 2096-5923**CN:** 31-2152/R**Responsible Institute:** Shanghai Mental Health Center**Sponsor:** Shanghai Municipal Health Commission**Publisher:** BMJ Publishing Group Ltd
Address: 600 South Wanping RD,
Shanghai, China**Telephone number:** +86 (021) 34773296**Website:** <https://gpsych.bmj.com/>**Email:** generalpsychiatry@smhc.org.cn**Printing:** Shanghai Mier Printing Co., Ltd.**Domestic Subscription:** Shanghai Magazine Subscription Office**Publication format:** Open Access**Chinese Postal Distribution Code:** 4-951**Advertisement permit number:**
3100420190018**Single issue price:** 18.00 RMB**Review**

- 366** Rapid-acting antidepressants targeting modulation of the glutamatergic system: clinical and preclinical evidence and mechanisms
S Wang, S Tang, J Huang, H Chen

Original research

- 372** Functional connectivity of the default mode network subsystems in patients with major depressive episodes with mixed features
R Liu, H Qi, L Guan, H Wu, J Liu, X Li, J Huang, L Zhang, Y Zhou, J Zhou
- 379** Accessing acute medical care to protect health: the utility of community treatment orders
S P Segal, L Badran, L Rimes
- 389** Impact of depression on the quality of sleep and immune functions in patients with coronary artery disease
L Cai, L Wei, J Yao, Y Qin, Y You, L Xu, J Tang, W Chen

Research methods in psychiatry

- 396** Adaptation and validation of the Chinese version of the Central Sensitisation Inventory in patients with chronic pain
D Liang, X Yu, X Guo, J Zhang

Forum

- 410** Lack of a timing system in the old but still new theory: towards elucidating schizophrenia
M Izadifar

Commentaries

- 417** Disturbed sensitive equilibrium led by stress-induced inflammation in psychiatric illness
H Zhao, R Jin, J Hu
- 423** Psychosomatic medicine and consultation-liaison psychiatry around the world: finding unity in the biopsychosocial model
H B Lee

Editorial BoardYuping Cao (China)
Raymond Chan (Hong Kong, China)
Wei Chen (China)
Linda Confalonieri (Italy)
Joseph F Cubells (USA)
Donghong Cui (China)
Yasong Du (China)
David L Dunner (USA)
Xiaoduo Fan (USA)
Yiru Fang (China)
Robert Freedman (USA)
Oliver Freudenreich (USA)
Kemeng Gao (USA)
David Goldberg (UK)
Byron J Good (USA)
Michael F Green (USA)
Sandeep Grover (India)
Kyooseb Ha (Korea)
Wei Hao (China)
Ali Madeeh Hashmi (Pakistan)
Yanling He (China)
Hajime Hirase (Japan)
Ji Hu (China)
Jianlin Ji (China)
Hua Jin (USA)
Ronald C Kessler (USA)
Murad M Khan (Pakistan)
Arthur Kleinman (USA)
Diana Koszycki (Canada)
Ee Heok Kua (Singapore)
Scott D Lane (USA)
Diego De Leo (Australia)Jose de Leon (USA)
Huichun Li (China)
Xiaobai Li (China)
Huaifang Li (China)
Jin Li (China)
Yunfeng Li (China)
Jianhui Liang (China)
Linda Lam (Hong Kong, China)
Dengtang Liu (China)
Tiebang Liu (China)
Manote Lotrakul (Thailand)
Hanna Lu (Hong Kong, China)
Zheng Lu (China)
Jair de Jesus Mari (Brazil)
Graham Mellsop (New Zealand)
Kim T Mueser (USA)
Daihui Peng (China)
Giovanni Maria Ruggiero (Italy)
Darrel A Regier (USA)
Shekhar Saxena (Switzerland)
Yuan Shen (China)
Shenxun Shi (China)
Tianmei Si (China)
Jair C Soares (USA)
Lishen Song (China)
Dan J Stein (South Africa)
Joan E Storey (USA)
Xueli Sun (China)
Christopher Paul Szabo (South Africa)
Wan Tang (USA)
Graham Thornicroft (UK)
Bing Tian (USA)
Phern-Chern Tor (Singapore)Pichet Udomratn (Thailand)
Eduard Vieta (Spain)
Chuanvye Wang (China)
Gaohua Wang (China)
Jijun Wang (China)
Liwei Wang (China)
Xiaoping Wang (China)
Zhen Wang (China)
Shifu Xiao (China)
Yutao Xiang (China)
Fude Yang (China)
Yu Yang (USA)
Albert Yeung (USA)
Tifei Yuan (China)
Wei Hua Yue (China)
Yufeng Zang (China)
Chen Zhang (China)
Ning Zhang (China)
Xiangyang Zhang (USA)
Jingping Zhao (China)
Xudong Zhao (China)
Douglas M Ziedonis (USA)**Editorial Office (UK)***General Psychiatry*
BMJ Journals
BMA House, Tavistock Square
London, WC1H 9JR, UK
E: info.gpsych@bmj.com**Editorial Office (China)**600 South Wanping RD, Shanghai,
200030, China
E: generalpsychiatry@smhc.org.cn

General Psychiatry

Providing leading psychiatry research since 1959

General Psychiatry is an open access journal that covers all topics of interest to psychiatrists and other mental health professionals internationally. The journal includes original research, systematic reviews, meta-analyses, forums on topical issues, case reports, research methods in psychiatry, letter and a unique section on 'biostatistics in psychiatry'.



ESCI



BMJ

万方数据



Learn more today
gpsych.bmj.com