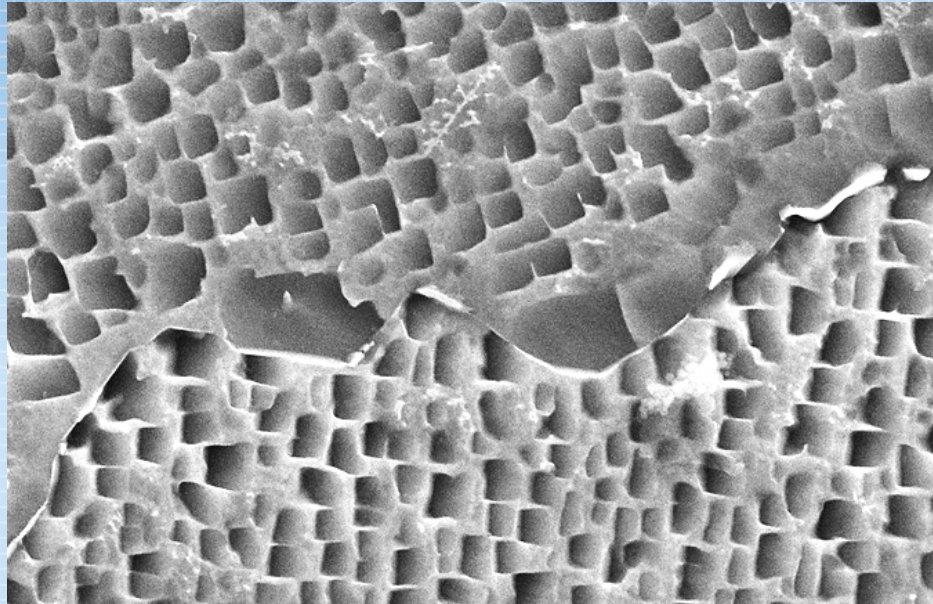


CHINA FOUNDRY

中国铸造

Vol. 20 No. 5 September 2023



On establishment of novel constitutive model for directionally solidified nickel-based superalloys utilizing machine learning methods

Page 365

CONTENTS

Vol. 20 No. 5 September 2023

Superalloy

- 365 On establishment of novel constitutive model for directionally solidified nickel-based superalloys utilizing machine learning methods
Jia-yan Sun, Rong Yin, Ye-yuan Hu, Yun-xiang Tan, and Qing-yan Xu
- 376 Effect of Ta on solidification characteristics and mechanical properties of DZ411 Ni-based superalloy
Peng Peng, Zi-jie Liu, Yuan-li Xu, Xu-dong Zhang, Zhi-kun Ma, and Jia-tai Wang
- 387 Effect of sintering temperature on microstructure and properties of 3D printing polysilazane reinforced Al_2O_3 core
Wen-jun Dong, Qiao-lei Li, Tian-ci Chen, Ming-ke Zou, Jing-jing Liang, Li-rong Liu, Hui Mei, and Jin-guo Li
- 395 Influence of heat treatments on incipient melting structures of DD5 nickel-based single crystal superalloy
Zhi-hong Jia, Chen-yang Li, Wen-xiang Jing, Xiang-feng Liang, Ze-kun Zhang, Jia-le Xiao, and Yu-tao Zhao
- 403 Elastic-viscoplastic constitutive equations of K439B superalloy and thermal stress simulation during casting process
Da-shan Sui, Yu Shan, Dong-xin Wang, Jun-yi Li, Yao Xie, Yi-qun Yang, An-ping Dong, and Bao-de Sun

Research & Development

- 414 A novel Ti-5.55Al-6.70Zr-1.50V-0.70Mo-3.41Nb-0.21Si alloy designed using cluster-plus-glue-atom model for laser additive manufacturing
Tian-yu Liu, Yan-chun Lou, Shuang Zhang, Zhi-hao Zhu, Jun Zhao, Shi-bing Liu, Kun Shi, and Ning Zhao
- 423 Corrosion and wear properties of in situ (TiB+TiC)/TA15 composites with a high volume percentage of reinforcement
Wei-long Wang, Kun Shi, Jun Zhao, Shi-bing Liu, Jiao-jiao Cheng, Wei-chen Qiu, Tian-yu Liu, and Zhi-yong Zhang

- 432 Simulation of inclined dendrites under natural convection by KKS phase field model based on CUDA
Chang-sheng Zhu, Tian-yu Li, Bo-rui Zhao, Cang-long Wang, and Zi-hao Gao
- 443 Effects of macrosegregation on mechanical and tribological properties of squeeze casting immiscible bearing alloys
Ming Xu, Yan-guo Yin, Cong-min Li, Guo-tao Zhang, and Cong-chong Duan
- 452 Distribution pattern of acoustic and streaming field during multi-source ultrasonic melt treatment process
Xiao-gang Fang, Qi Wei, Tian-yang Zhang, Ji-guang Liu, You-wen Yang, Shu-lin Lü, Shu-sen Wu, and Yi-qing Chen
- 461 Effect of electromagnetic stirrer centered outside the mold on steel flow field of bloom continuous casting
Li-dong Xing, Yan-ping Bao, Min Wang, and Yi-hong Li

Advertisements

Back cover Foundry Journal

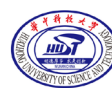
B1 InteCAST Software

B2-B3 Call for Papers

– The 75th World Foundry Congress

B4 2023 China Foundry Congress

Partners



State Key Laboratory of Materials Processing and Die & Mould Technology, Huazhong University of Science and Technology



National Joint Engineering Research Center of High Performance Metal Wear Resistant Materials Technology, Jinan University



Sponsor:
Shenyang Research Institute of Foundry
FICMES
Publisher:
Foundry Journal Agency

A National Periodical Award-winning Journal

Welcome to advertise in FOUNDRY journal

Scan this QR code using your mobile device
Join "Foundry" journal WeChat



扫描“铸造杂志”
微信二维码，加关注

有机会分享：最新铸造行业资讯
有机会获得：《铸造》电子版杂志
有机会阅读：重要的学术论文
有机会收藏：独家的铸造行业图片

Add: No.17 Yunfeng Street South, Tiexi District, Shenyang 110022, China
Tel: +86-24-25611775 25623768
Fax: +86-24-25611880
Website: <http://www.foundryworld.com>
E-mail: ad@foundryworld.com

ISSN 1672-6421

