

2020 Dec. Volume 21 Issue 12

浙江大学学报（英文版）B辑：生物医学与生物技术

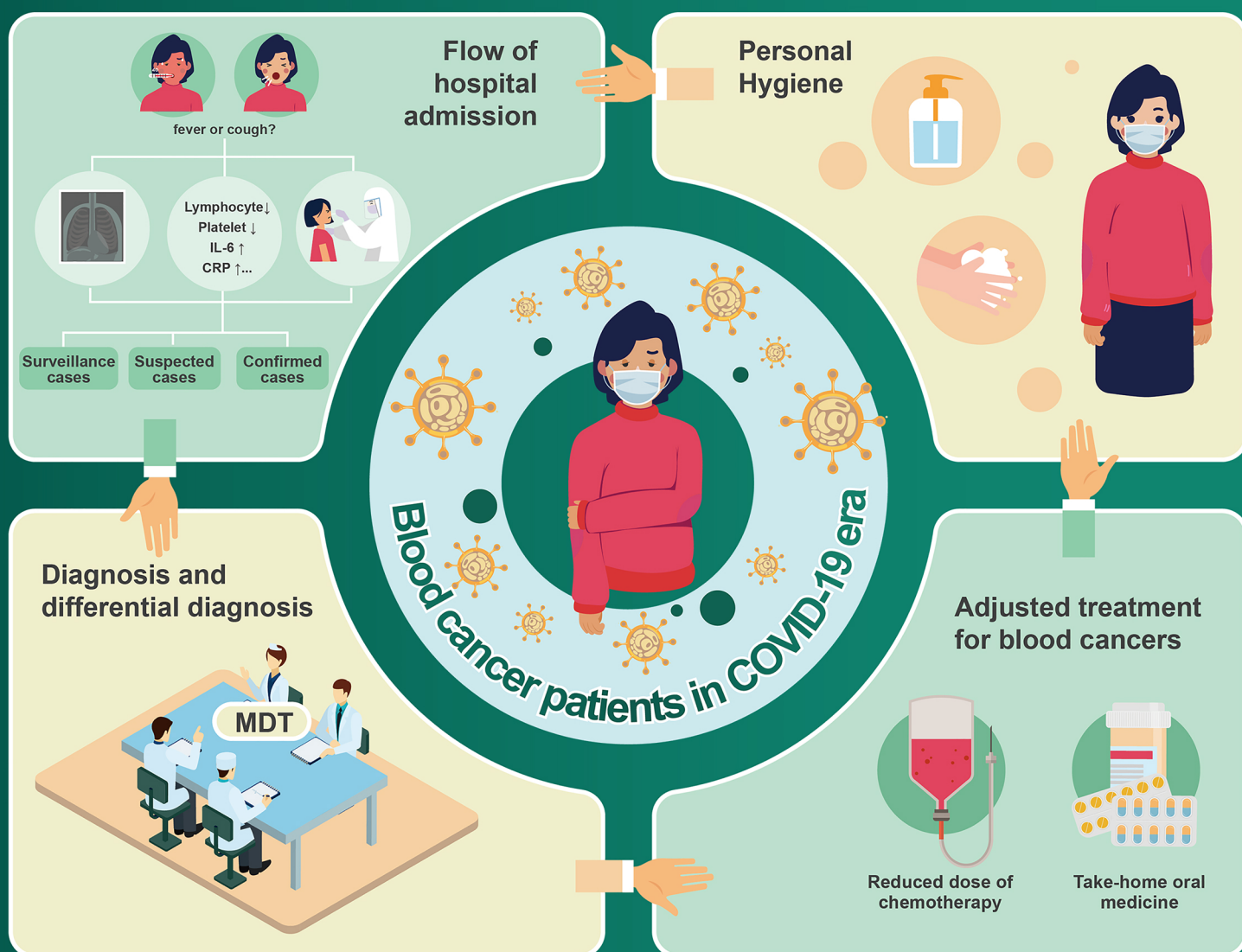
Journal of Zhejiang University–SCIENCE B

Biomedicine & Biotechnology

Editors-in-Chief: Shu-min DUAN Zhi-hong LIU

ISSN 1673-1581

CN 33-1356/Q



Impact factor:
2.082 (2019)

万方数据

ZHEJIANG
UNIVERSITY PRESS

Springer



*Journal of Zhejiang
University-SCIENCE B
(Biomedicine &
Biotechnology)*

Editors-in-Chief

Shu-min DUAN
Zhi-hong LIU

Administrated by

Ministry of Education, China

Sponsored by

Zhejiang University

Published by

Zhejiang University Press

Edited by

Editorial Office of *Journal of
Zhejiang University-SCIENCE A/B &
FITEE*

Printed by

Hangzhou Shengyuan Printing
Services Co., Ltd.

Publication Date

1st Week per Month

Subscription

yangsq@zju.edu.cn;
+86-571-87952783

Contact

Zhejiang University Press,
148 Tianmushan Road,
Hangzhou 310028, China;
+86-571-87952783;
jzus@zju.edu.cn

Price

100 CNY/Issue

ISSN 1673-1581

CN 33-1356/Q

CONTENTS

Special Feature on COVID-19

Review

- 921 Weathering the storm: COVID-19 infection in patients with hematological malignancies
Lin-qin WANG, Elaine TAN SU YIN, Guo-qing WEI,
Yong-xian HU, Arnon NAGLER, He HUANG

Article

- 940 Factors associated with a SARS-CoV-2 recurrence after hospital discharge among patients with COVID-19: systematic review and meta-analysis
Meng-qi YAO, Qiu-xian ZHENG, Jia XU, Jing-wen DENG, Tian-tian GE, Hai-bo ZHOU,
Feng-tian WU, Xin-yu GU, Qin YANG, Yan-li REN, Gang WANG, Zhi CHEN

Correspondence

- 948 Safety of protease inhibitors and Arbidol for SARS-CoV-2 pneumonia in Zhejiang Province, China
Yong-zheng GUO, Kai-jin XU, Yong-tao LI, Jia-dan FU,
Min XU, Ling YU, Ji-fang SHENG, Biao ZHU
- 955 Clinical characteristics and plasma antibody titer of patients with COVID-19 in Zhejiang, China
Wei-ling XIANG, Jing-jing CHENG, Lian-peng WU, Bing-yu CHEN, Wen-xin LI,
Dan-ying QIU, Wei ZHANG, Fei-hang GE, Dong CHEN, Zhen WANG

Regular Papers

Review

- 961 Detection of human papillomavirus in oropharyngeal squamous cell carcinoma
Fatin Hazwani FAUZI, Nurul Izzati HAMZAN, Nurhayu Ab RAHMAN,
Siti SURAIYA, Suharni MOHAMAD

Articles

- 977 Fetal growth, fetal development, and placental features in women with polycystic ovary syndrome: analysis based on fetal and placental magnetic resonance imaging
Qing ZHANG, Zhong-kun BAO, Mei-xiang DENG, Qiong XU, Dan-dan DING,
Man-man PAN, Xi XI, Fang-fang WANG, Yu ZOU, Fan QU
- 990 Silencing of *DsbA-L* gene impairs the PPAR γ agonist function of improving insulin resistance in a high-glucose cell model
Xuan ZHOU, Jia-qi LI, Li-jie WEI, Meng-zhou HE, Jing JIA,
Jing-yi ZHANG, Shao-shuai WANG, Ling FENG

Correspondence

- 999 Efficient propagation with in vitro seed germination of *Vanda falcata*
Xiao-fen LIU, Li-li XIANG, Yan HUANG, Ya-jing LI, Fang LI

- I Total contents

English Consultants Alan SEAL (NZ), Elissa KRIEG (USA), Mary Beth SAFFO (USA)

Executive Editors Qing YE, Han-feng LIN