

中国科技核心期刊  
中国农林核心期刊

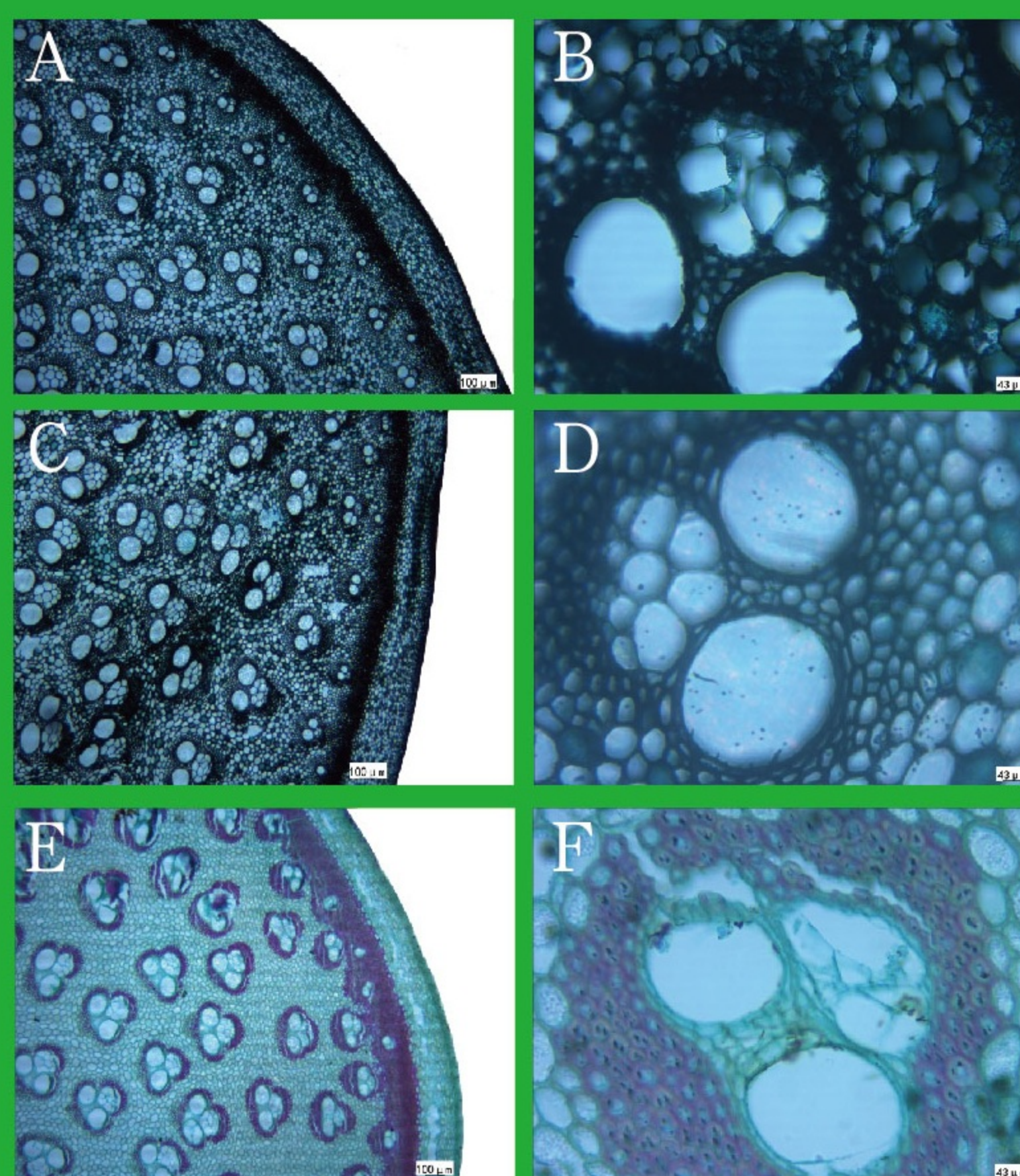
ISSN 1000-6567  
CN 33-1399/S

# 竹子学报

第42卷

第1期

2023年3月



JOURNAL OF BAMBOO  
RESEARCH

土壤水分和养分对箬竹竹鞭解剖特征及其适应可塑性的影响

可拆装竹集成材家具用榫接合的力学性能研究

基于“两山理论”的竹旅游基础体系构建——以安吉县为例

ISSN 1000-6567



9 771000 656238

国家林业和草原局竹子研究开发中心  
中国林学会竹子分会 主办  
浙江省林业科学研究院

中国 浙江 杭州  
HANGZHOU ZHEJIANG CHINA

目次

土壤水分和养分对箬竹竹鞭解剖特征及其适应可塑性的影响 ..... 吴义远,董文渊,浦 婵,等(1)

不同产地金佛山方竹竹笋营养成分分析 ..... 徐 田,廖永坚,宁德鲁(11)

威信县金佛山方竹生长发育规律研究 ..... 黄 维,董文渊,钟 欢,等(18)

笋用麻竹地上生物量分配特征与最优模型研究 ..... 郑云丽,徐振国,贾冬冬,等(23)

表板热处理温度对展平竹—杨木复合板物理力学性能的影响  
..... 韩 佳,黄 纯,杨宇涵,等(30)

可拆装竹集成材家具用榫接合的力学性能研究 ..... 连彩萍,翁昊辰,吴智慧,等(38)

嵊州市推进竹业共富实践与思考 ..... 黄少平,张朗锋,倪惠菁,等(45)

基于“两山理论”的竹旅游基础体系构建——以安吉县为例 ..... 邱希阳(50)

观赏竹种选择及在园林景观中的应用 ..... 马 帅,乌日娜,熊文鹏,等(56)

楚国竹编工艺特性及其审美研究 ..... 陈金栓(61)

基于造型形式与主题的竹盆景审美偏好研究 ..... 刘格言,梁雨苗,潘品好,等(68)

东汉时期简牍书法形式美赏析 ..... 杨絮飞,李国新,高婧儒(80)

白居易居所竹景探析 ..... 冯玉兰(88)

Contents

Anatomical Characteristics and Adaptive Plasticity of *Qiongzhueta tumidinoda* Rhizome under Different Soil Moisture and Nutrients Conditions ..... WU Yi-yuan, DONG Wen-yuan, PU Chan, *et al.* (1)

Nutrient Analysis of *Chimonobambusa utilis* Shoots from Five Different Habitats ..... XU Tian, LIAO Yong-jian, NING De-lu (11)

Study on the Growth and Development Law of *Chimonobambusa utilis* in Weixin County ..... HUANG Wei, DONG Wen-yuan, ZHONG Huan, *et al.* (18)

Study on Allocation of Aboveground Biomass and Optimal Model of *Dendrocalamus latiflorus* Shoot-producing ..... ZHENG Yun-li, XU Zhen-guo, JIA Dong-dong, *et al.* (23)

Effect of Heat Treatment Temperature of Surface Plate on Physical and Mechanical Properties of Flatten-Bamboo-Poplar Veneer Composite Board ..... HAN Jia, HUANG Chun, YANG Yu-han, *et al.* (30)

Study on the Detachable Design and Mechanical Property of Mortise Joints for Laminated Bamboo Furniture ..... LIAN Cai-ping, WENG Hao-chen, WU Zhi-hui, *et al.* (38)

Practice and Thinking on Promoting the Prosperity of Bamboo Industry in Shengzhou ..... HUANG Shao-ping, ZHANG Lang-feng, NI Hui-jing, *et al.* (45)

Construction of Bamboo Tourism Infrastructure Based on “Two Mountains Theory”, Anji County as an Example ..... QIU Xi-yang (50)

Choice of Ornamental Bamboo and Its Application in Landscape ..... MA Shuai, WU Ri-na, XIONG Wen-peng, *et al.* (56)

Study on Bamboo Weaving Process Characteristics and Aesthetics in Chu State ..... CHEN Jin-shuan (61)

Research on Aesthetic Preference of Bamboo Bonsai Based on Modeling Form and Theme ..... LIU Ge-yan, LIANG Yu-miao, PAN Pin-yu, *et al.* (68)

The Aesthetic Appreciation of Bamboo Calligraphy in Eastern Han Dynasty ..... YANG Xu-fei, LI Guo-xin, GAO Jing-ru (80)

An Analysis of Bamboo Sceneries in Bai Juyi’s Residences ..... FENG Yu-lan (88)